

Tool model
Tool Status

F28WW-E
active

BOSTITCH®

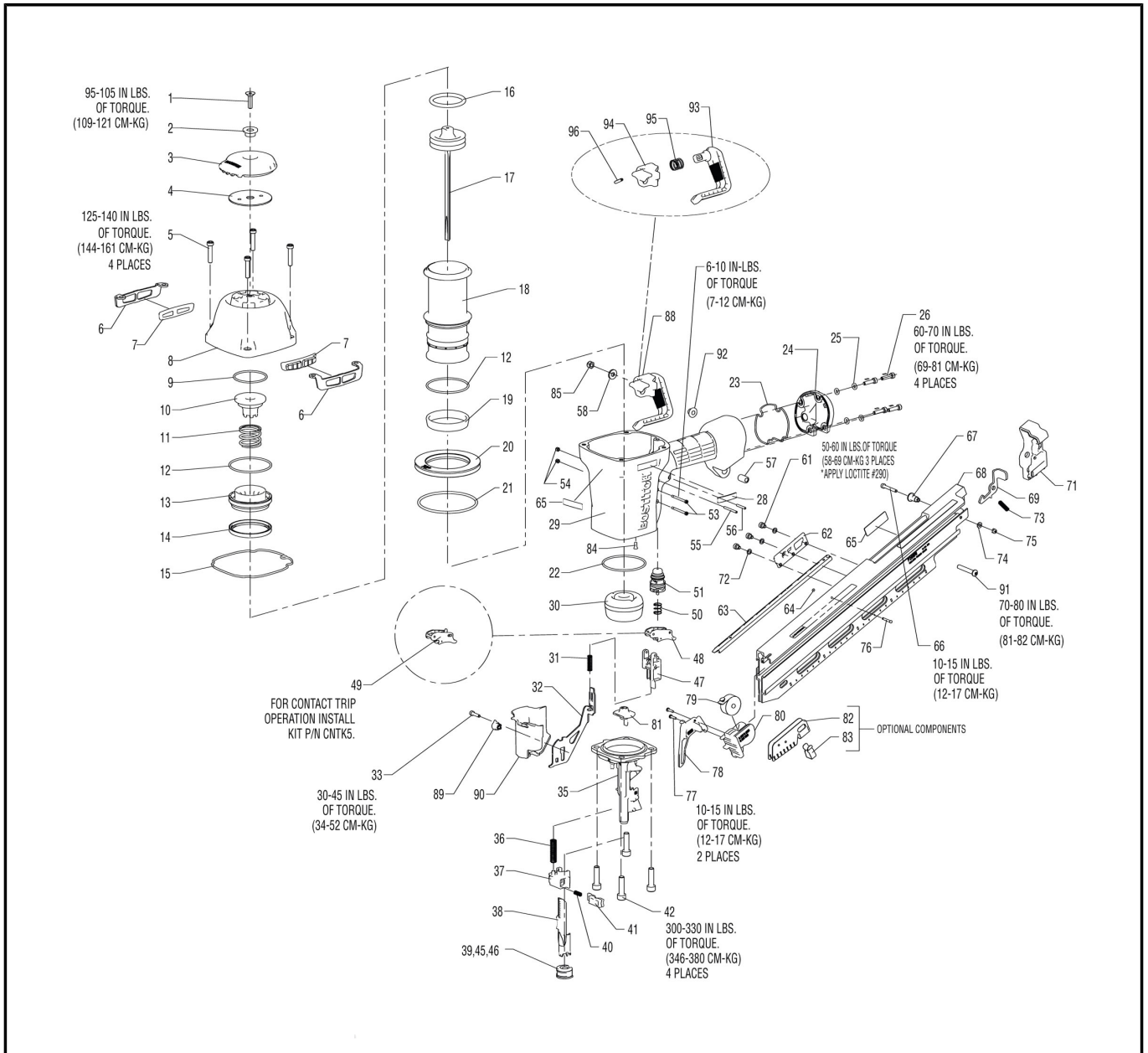


Chart Ref	Spare part code	Description	Status	Previous Part Code 1	Previous Part Code 2
1	MSF6100-25	SCREW,SFHCS,M6X1.00X25	active		
2	163859	BUSHING,EXHAUST DEFLECTOR	active		
3	163818	DEFLECTOR,EXHAUST	active		
4	163830	PLATE,CAP	active		
5	MSC6100-30	SCREW,SHCS,M6X1.00X30	active		
6	163827	PLATE,WEAR	active		
7	149819	WEAR GUIDE	active		
8	163848	FRAME CAP,MACHINING	active		
9	105814	O-RING,1.929X.098	active		
10	163820	BUMPER,HEAD VALVE	active		
11	163844	SPRING,HEAD VALVE	active		
12	163822	O-RING,2.487X.103XNBR	active		
13	163821	LOWER BODY,HEAD VALVE	active		
14	163823	SEAL,HEAD VALVE	active		
15	163845	SEAL,FRAME/CAP	active		

Chart Ref	Spare part code	Description	Status	Previous Part Code 1	Previous Part Code 2
16	851606	O-RING,1.850X.210	active		
17	163922	ASSEMBLY,PISTON/DRIVER	active		
18	163824	SLEEVE,CYLINDER	active		
19	175520	SEAL,CHECK	active		
20	163855	RING,CYLINDER SLEEVE	active		
21	108718	O-RING,3.484X.139	active		
22	89673	O-RING,2.550X.103	active		
23	163856	SEAL,END CAP	active		
24	163843	END CAP,PAINT	active		
25	T50118	WASHER,PLAIN	active		
26	MSC5080-20	SCREW,SOC HD. CAP M5 X 20	fut disc		
28	171432	LABEL,MAGNESIUM	active		
29	171127	FRAME,OVERMOLD	active		
30	107231	BUMPER,DRIVE	active		
31	166781	SPRING,UPPER TRIP	active		
32	163899	ARM,UPPER CONTACT	active		
33	MSC4070-16	SCREW,SHCS,M4X0.7X16	active		
35	163927	NOSE,F28WW	active		
36	166772	SPRING,CONTACT ARM	active		
37	108224	CASTING,HOUSING CONTACT	active		
38	108227	ARM,LOWER CONTACT	active		
39	121072	ASSEMBLY,TRIP FOOT	active		
40	115230	SPRING,HOUSING	active		
41	166777	CASTING,PLUNGER	active		
42	MSC8125-30	SCREW,SHCS M8X30	active		
45	121070	FOOT,TRIP	active		
46	121071	CLIP,TRIP FOOT	active		
47	163883	GUIDE,ARM	active		
48	SEQ7	KIT,SEQUENTIAL TRIP CONVERSION	active		
49	CNTK5	KIT,CONTACT TRIP CONVERSION	active		
50	100387	SPRING,COMPRESSION	active		
51	TVA6	KIT,TRIGGER VALVE	active		
53	108562	SCREW,TRIGGER PIVOT	active		
54	MHE3050-100	NUT,NYLON M3X.50	active		
55	100298	PIN,SPIRAL M3X30	active		
56	MPP030020	PIN,SPIRAL M3X20MM	active		
57	N70143	BUSHING,RUBBER	active		
58	MPW6.2	WASHER.SPECIAL	active		
61	MSC5080-6	SCREW,SHCS,M5X0.80X6	active		
62	163828	NUT,TEE	active		
63	159718	LINER,NAIL GUIDE,N88WWB	active		
64	166797	O-RING,.056X.060 NBR	active		
65	171347	LABEL,FASTENER,F28WW-E	active		
66	100261	SCREW,SHCS,M4X30	active		
67	121472	SPACER,PUSHER LATCH	active		
68	166784	MAGAZINE,PAD PRINT,F28WW	active		
69	166778	LATCH,PUSHER	active		
71	116563	CAP END,MAGAZINE	active		
72	116965	WASHER,PLAIN M5	active		
73	120878	SPRING, PUSHER LATCH	active		

Chart Ref	Spare part code	Description	Status	Previous Part Code 1	Previous Part Code 2
74	MPW4	WASHER,PWN,M4	active		
75	MHE4070-100	ELASTIC STOP NUT,M4	active		
76	121407	PIN,SPECIAL	active		
77	100209	SCREW,STRHS,M3X0.5X12	active		
78	158767	PUSHER,WW	active		
79	115143	SPRING,CONSTANT FORCE	active		
80	120945	HANDLE,PUSHER	active		
81	163882	GUIDE,DRIVER	active		
82	112630	SHIELD,DUST	active		
83	112631	SPRING,CLIP	active		
84	163858	PLUG,EXHAUST	active		
85	MHE6100-100	NUT,ESN M6X1	active		
88	171354	ASSEMBLY,UTILITY HOOK	active		
89	163903	BUSHING,TRIP COVER	active		
90	171338	COVER,TRIP	active		
91	MSB6100-40	SCREW,SBHCS,M6X1.00X40	active		
92	171342	WASHER,UTILITY HOOK	active		
93	171339	HOOK,UTILITY	active		
94	171340	MOUNT,UTILITY HOOK	active		
95	171341	SPRING,UTILITY HOOK	active		
96	UB3811.2	PIN, SPIROL - 5/32X3/4	active		
option	N89ORK	O-RING REPAIR KIT	active		
option	N80K2	REMOTE CONTROL KIT	active		