

**Tool model**  
**Tool Status**

F33PTSM-E  
active

**BOSTITCH®**

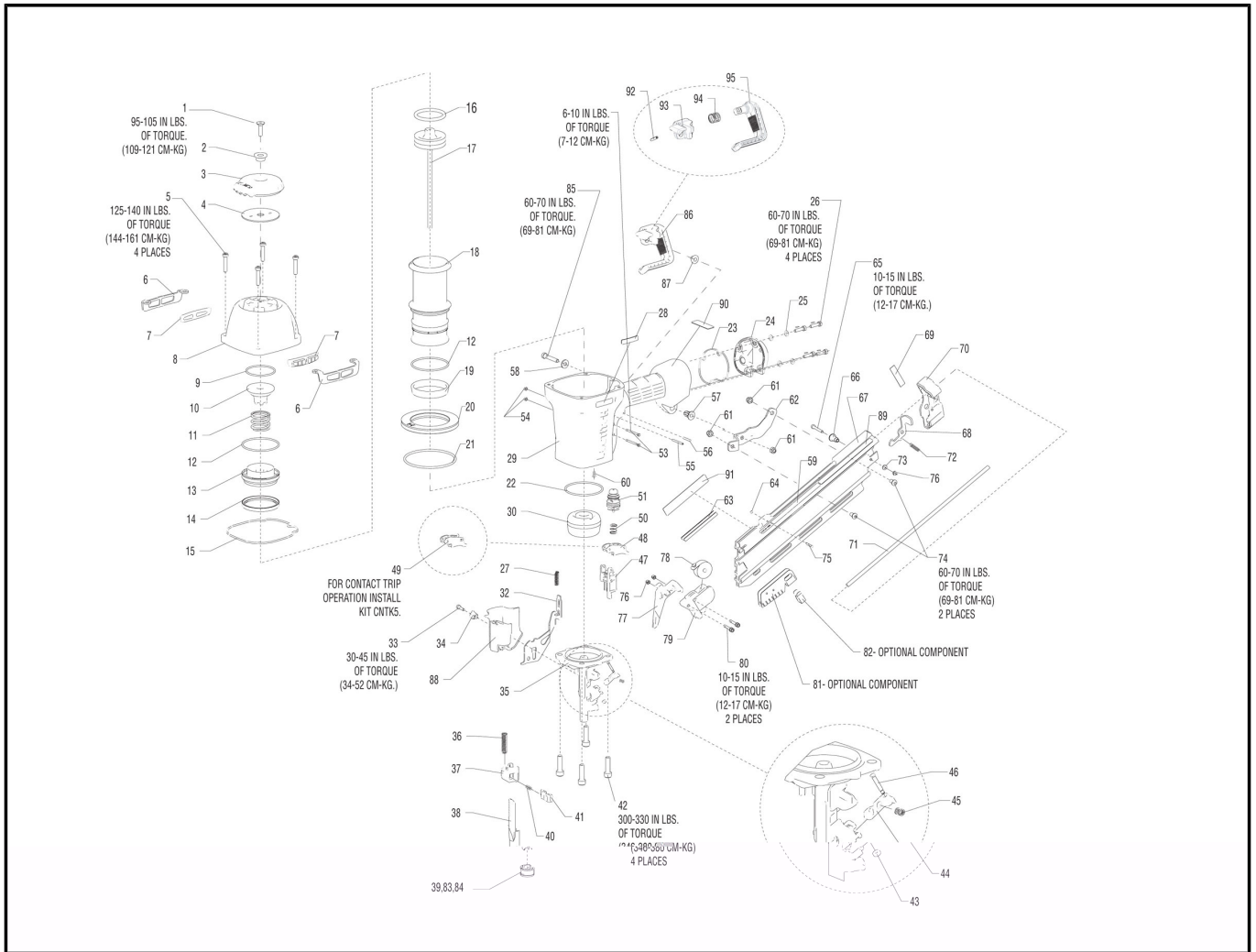


Chart Ref	Spare part code	Description	Status	Previous Part Code 1	Previous Part Code 2
1	<a href="#">MSF6100-25</a>	SCREW,SFHCS,M6X1.00X25	active		
2	<a href="#">163859</a>	BUSHING,EXHAUST DEFLECTOR	active		
3	<a href="#">163818</a>	DEFLECTOR,EXHAUST	active		
4	<a href="#">163830</a>	PLATE,CAP	active		
5	<a href="#">MSC6100-30</a>	SCREW,SHCS,M6X1.00X30	active		
6	<a href="#">163827</a>	PLATE,WEAR	active		
7	<a href="#">149819</a>	WEAR GUIDE	active		
8	<a href="#">163848</a>	FRAME CAP,MACHINING	active		
9	<a href="#">105814</a>	O-RING,1.929X.098	active		
10	<a href="#">163820</a>	BUMPER,HEAD VALVE	active		
11	<a href="#">163844</a>	SPRING,HEAD VALVE	active		
12	<a href="#">163822</a>	O-RING,2.487X.103XNBR	active		
13	<a href="#">163821</a>	LOWER BODY,HEAD VALVE	active		
14	<a href="#">163823</a>	SEAL,HEAD VALVE	active		
15	<a href="#">163845</a>	SEAL,FRAME/CAP	active		
16	<a href="#">851606</a>	O-RING,1.850X.210	active		
17	<a href="#">163922</a>	ASSEMBLY,PISTON/DRIVER	active		
18	<a href="#">163824</a>	SLEEVE,CYLINDER	active		
19	<a href="#">175520</a>	SEAL,CHECK	active		
20	<a href="#">163855</a>	RING,CYLINDER SLEEVE	active		

Chart Ref	Spare part code	Description	Status	Previous Part Code 1	Previous Part Code 2
21	<a href="#">108718</a>	O-RING,3.484X.139	active		
22	<a href="#">89673</a>	O-RING,2.550X.103	active		
23	<a href="#">163856</a>	SEAL,END CAP	active		
24	<a href="#">163843</a>	END CAP,PAINT	active		
25	<a href="#">T50118</a>	WASHER,PLAIN	active		
26	<a href="#">MSC5080-20</a>	SCREW,SOC HD. CAP M5 X 20	fut disc		
27	<a href="#">166781</a>	SPRING,UPPER TRIP	active		
28	<a href="#">171432</a>	LABEL,MAGNESIUM	active		
29	<a href="#">171127</a>	FRAME,OVERMOLD	active		
30	<a href="#">107231</a>	BUMPER,DRIVE	active		
32	<a href="#">163900</a>	ARM,UPPER CONTACT	active		
33	<a href="#">MSC4070-16</a>	SCREW,SHCS,M4X0.7X16	active		
34	<a href="#">163903</a>	BUSHING,TRIP COVER	active		
35	<a href="#">163924</a>	NOSE,F33PT	active		
36	<a href="#">166772</a>	SPRING,CONTACT ARM	active		
37	<a href="#">108224</a>	CASTING,HOUSING CONTACT	active		
38	<a href="#">142941</a>	ARM,LOWER CONTACT	active		
39	<a href="#">121072</a>	ASSEMBLY,TRIP FOOT	active		
40	<a href="#">115230</a>	SPRING,HOUSING	active		
41	<a href="#">166777</a>	CASTING,PLUNGER	active		
42	<a href="#">MSC8125-30</a>	SCREW,SHCS M8X30	active		
43	<a href="#">854004</a>	WASHER,RUBBER-7	active		
44	<a href="#">163877</a>	PAWL	active		
45	<a href="#">163878</a>	SPRING,CHECK PAWL	active		
46	<a href="#">149882</a>	PIN,CHECK PAWL	active		
47	<a href="#">163883</a>	GUIDE,ARM	active		
48	<a href="#">SEQ7</a>	KIT,SEQUENTIAL TRIP CONVERSION	active		
49	<a href="#">CNTK5</a>	KIT,CONTACT TRIP CONVERSION	active		
50	<a href="#">100387</a>	SPRING,COMPRESSION	active		
51	<a href="#">TVA6</a>	KIT,TRIGGER VALVE	active		
53	<a href="#">108562</a>	SCREW,TRIGGER PIVOT	active		
54	<a href="#">MHE3050-100</a>	NUT,NYLON M3X.50	active		
55	<a href="#">100298</a>	PIN,SPIRAL M3X30	active		
56	<a href="#">MPP030020</a>	PIN,SPIRAL M3X20MM	active		
57	<a href="#">123859</a>	BUSHING,FLANGED ISOLATION	active		
58	<a href="#">MPW6.2</a>	WASHER.SPECIAL	active		
59	<a href="#">158612</a>	LABEL,WARNING	active		
60	<a href="#">163858</a>	PLUG,EXHAUST	active		
61	<a href="#">MHE6100-100</a>	NUT,ESN M6X1	active		
62	<a href="#">166776</a>	BRACKET,MAGAZINE	active		
63	<a href="#">171352</a>	LINER,SHORT MAGAZINE	active		
64	<a href="#">166797</a>	O-RING,.056X.060 NBR	active		
65	<a href="#">100261</a>	SCREW,SHCS,M4X30	active		
66	<a href="#">121472</a>	SPACER,PUSHER LATCH	active		
67	<a href="#">166785</a>	MAGAZINE,SHORT	active		
68	<a href="#">166778</a>	LATCH,PUSHER	active		
69	<a href="#">120927</a>	LABEL,SENSOR SMALL (DR)	disc		
70	<a href="#">163912</a>	ASSEMBLY,END CAP	active		
71	<a href="#">171353</a>	ROD,GUIDE	active		
72	<a href="#">120878</a>	SPRING, PUSHER LATCH	active		

Chart Ref	Spare part code	Description	Status	Previous Part Code 1	Previous Part Code 2
73	<a href="#">MPW4</a>	WASHER,PWN,M4	active		
74	<a href="#">MSB6100-12</a>	SCREW,SBHCS,M6X1.00X12	active		
75	<a href="#">173877</a>	PIN,SPECIAL	active		
76	<a href="#">MHE4070-100</a>	ELASTIC STOP NUT,M4	active		
77	<a href="#">163898</a>	PUSHER	active		
78	<a href="#">115143</a>	SPRING,CONSTANT FORCE	active		
79	<a href="#">163902</a>	HANDLE,PUSHER	active		
80	<a href="#">121052</a>	SCREW,SHCS,M4X0.70X25	active		
81	<a href="#">112630</a>	SHIELD,DUST	active		
82	<a href="#">112631</a>	SPRING,CLIP	active		
83	<a href="#">121071</a>	CLIP,TRIP FOOT	active		
84	<a href="#">121070</a>	FOOT,TRIP	active		
85	<a href="#">MSC6100-25</a>	SCREW,SHCS,M6X1.00X25	active		
86	<a href="#">171354</a>	ASSEMBLY,UTILITY HOOK	active		
87	<a href="#">171342</a>	WASHER,UTILITY HOOK	active		
88	<a href="#">171338</a>	COVER,TRIP	active		
89	<a href="#">163926</a>	LABEL,FASTENER SPEC.MCN	active		
90	<a href="#">104981</a>	LABEL,WARNING	active		
91	<a href="#">171335</a>	LABEL,WARNING,METAL CONNECTOR	active		
92	<a href="#">UB3811.2</a>	PIN, SPIROL - 5/32X3/4	active		
93	<a href="#">171340</a>	MOUNT,UTILITY HOOK	active		
94	<a href="#">171341</a>	SPRING,UTILITY HOOK	active		
95	<a href="#">171339</a>	HOOK,UTILITY	active		
96	<a href="#">173876</a>	BRACKET,SHORT MAGAZINE	active		
option	<a href="#">N89ORK</a>	O-RING REPAIR KIT	active		
option	<a href="#">N80K2</a>	REMOTE CONTROL KIT	active		