

**Tool model**  
**Tool Status**

IC60-1-E  
active

**BOSTITCH®**

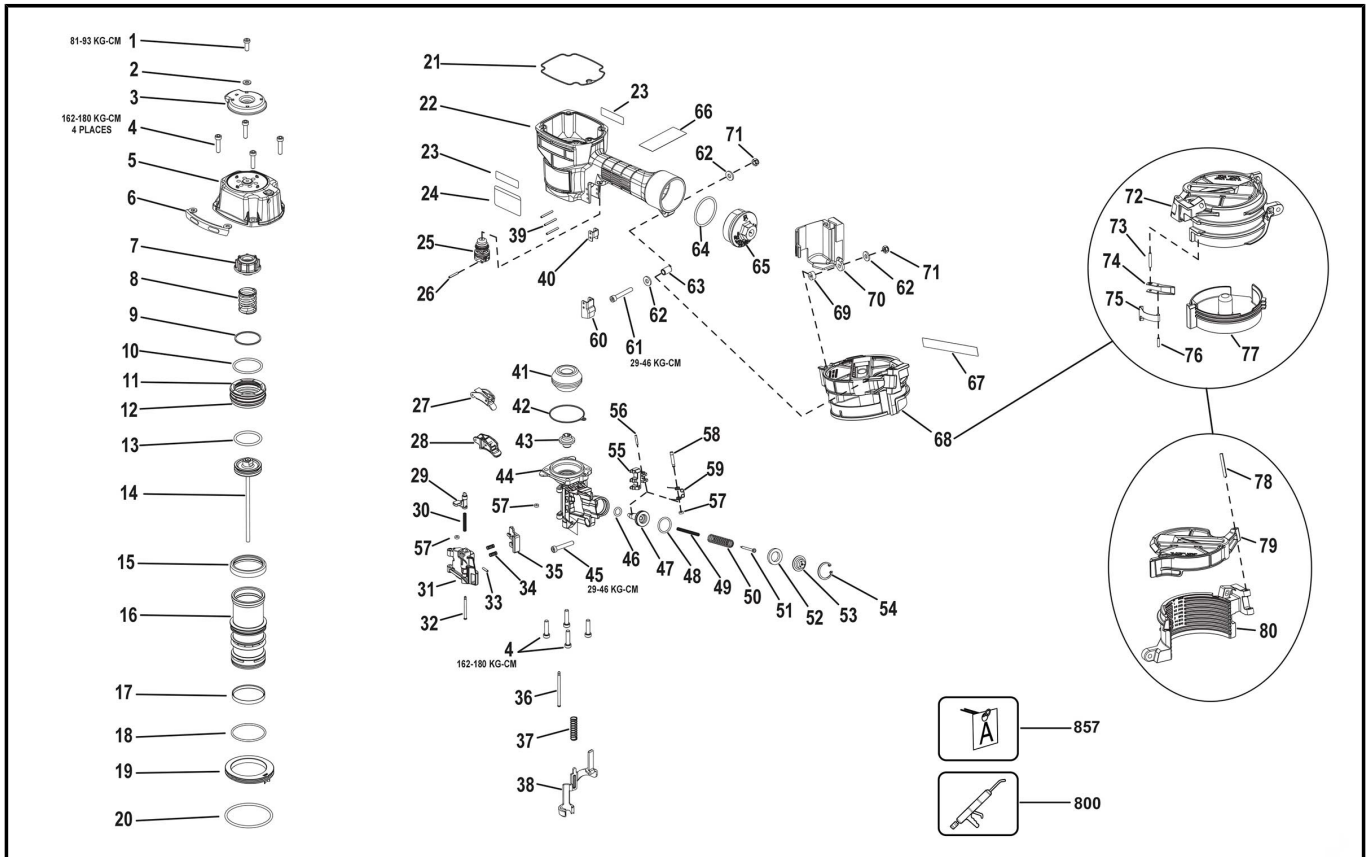


Chart Ref	Spare part code	Description	Status	Previous Part Code 1	Previous Part Code 2
1	<a href="#">MSLC6100-16</a>	SCREW, SLHCS M6 X 1.00X16	active		
2	<a href="#">MPW6.3</a>	WASHER,PWN M6	active		
3	<a href="#">T55034</a>	COVER,EXHAUST	active		
4	<a href="#">MSC6100-25</a>	SCREW,SHCS,M6X1.00X25	active		
5	<a href="#">105584</a>	CAP (SERVICE PART)	active		
6	<a href="#">100185</a>	WEAR PLATE	active		
7	<a href="#">T55050</a>	BUMPER, TOP	active		
8	<a href="#">854016</a>	SPRING, HEAD VALVE	active		
9	<a href="#">T55031</a>	RING, BUMPER	active		
10	<a href="#">MRG041630</a>	O-RING, 1.638X.118	active		
11	<a href="#">105577</a>	HEAD VALVE (SERVICE PART)	active		
12	<a href="#">MRG052526</a>	O-RING, 2.067X.103	active		
13	<a href="#">850607</a>	O-RING, 1.484X.139	active		
14	<a href="#">104345</a>	ASSEMBLY, PISTON/DRIVER	active		
15	<a href="#">T60006</a>	SEAL, CYLINDER	active		
16	<a href="#">100568</a>	CYLINDER SLEEVE	active		
17	<a href="#">T60021</a>	SEAL, CHECK	active		
18	<a href="#">850006</a>	O-RING, 1.987X.103	active		
19	<a href="#">T55027</a>	RING, CYLINDER	active		
20	<a href="#">851753</a>	O-RING, 2.734X.139	active		
21	<a href="#">T55024</a>	GASKET, FRAME CAP	active		
22	<a href="#">N65005</a>	FRAME (MACHINING)	active		
23	<a href="#">9R209359</a>	BRAND LABEL	active		
24	<a href="#">9R209358</a>	RATING LABEL	active		
25	<a href="#">TVA6</a>	KIT, TRIGGER VALVE	active		

Chart Ref	Spare part code	Description	Status	Previous Part Code 1	Previous Part Code 2
26	<a href="#">MPP030020</a>	PIN, SPIRAL M3X20MM	active		
27	<a href="#">CNTK2</a>	KIT, CONTACT TRIP CONVERSION	active		
28	<a href="#">SEQ6</a>	KIT, SEQUENTIAL	active		
29	<a href="#">N70150</a>	LATCH DOOR	active		
30	<a href="#">101408</a>	SPRING, COMPRESSION	active		
31	<a href="#">100060</a>	DOOR	active		
32	<a href="#">100182</a>	PIN, PIVOT	active		
33	<a href="#">MPP030012</a>	PIN, SPIROL	active		
34	<a href="#">854011</a>	COMPRESSION SPRING	active		
35	<a href="#">100180</a>	CHECK PAWL MACHINING	active		
36	<a href="#">N65036</a>	PIN, SPECIAL	active		
37	<a href="#">100874</a>	SPRING, COMPRESSION	active		
38	<a href="#">9R195382</a>	TRIP SA	active		
39	<a href="#">9R195354</a>	SPIROL PIN	active		
40	<a href="#">100337</a>	GUIDE, ARM	active		
41	<a href="#">105500</a>	BUMPER	active		
42	<a href="#">102301</a>	SEAL, NOSE	active		
43	<a href="#">116989</a>	DRIVER GUIDE, LARGE FLUTE	active		
44	<a href="#">9R195428</a>	NOSE	active		
45	<a href="#">MSC6100-35</a>	SCREW, SHCS, M6X1.00X35	active		
46	<a href="#">MRG009824</a>	O-RING, .386X.094	active		
47	<a href="#">121829</a>	PISTON, FEED	active		
48	<a href="#">851437</a>	O-RING, .819X.095	active		
49	<a href="#">N65042</a>	COMP SPRING 3428	active		
50	<a href="#">N65043</a>	COMP SPRING 3335	active		
51	<a href="#">N65044</a>	SPRING GUIDE	active		
52	<a href="#">101723</a>	BUMPER, FEED PISTON	active		
53	<a href="#">N65045</a>	COLLAR, SPRING	active		
54	<a href="#">MRB026</a>	RETAINING RING, METRIC	active		
55	<a href="#">100616</a>	PAWL, FEED	active		
56	<a href="#">MPP030016</a>	PIN, SPIRAL, M3X16MM	active		
57	<a href="#">854004</a>	WASHER, RUBBER-7	active		
58	<a href="#">N50087</a>	PIN, SPECIAL (STEP)	active		
59	<a href="#">854023</a>	SPRING, TORSION	active		
60	<a href="#">100336</a>	ARM, COVER-B	active		
61	<a href="#">MSC6100-40</a>	SCREW, SOC. HD. CAP M6X1.00X40	active		
62	<a href="#">MPW6.2</a>	WASHER, SPECIAL	active		
63	<a href="#">N70143</a>	BUSHING, RUBBER	active		
64	<a href="#">MRG044331</a>	O-RING, 1.748X.122	active		
65	<a href="#">N65006</a>	CAP, END	active		
66	<a href="#">9R209340</a>	WARNING LABEL	active		
67	<a href="#">9R209349</a>	WARNING LABEL	active		
68	<a href="#">N65004A</a>	CANISTER ASSY	active		
69	<a href="#">105973</a>	SPACER	active		
70	<a href="#">100068</a>	ARM COVER (A) N57C	active		
71	<a href="#">MHE6100-100</a>	NUT, ESN M6X1	active		
72	<a href="#">105837</a>	ASSY, CANISTER COVER	active		
73	<a href="#">UB2816.4</a>	SPIRAL PIN 1/8 X 1	active		
74	<a href="#">107455</a>	LATCH, CANISTER	active		
75	<a href="#">N80108</a>	SPRING, FLAT	active		

<b>Chart Ref</b>	<b>Spare part code</b>	<b>Description</b>	<b>Status</b>	<b>Previous Part Code 1</b>	<b>Previous Part Code 2</b>
76	<a href="#">UB2110.4</a>	PIN, ROLL 1/8 X 5/8	active		
77	<a href="#">N65002</a>	CANISTER BOTTOM	active		
78	<a href="#">UB3824.4</a>	SPIRAL PIN 3/16 X 1-1/2	active		
79	<a href="#">N65003</a>	CANISTER COVER	active		
80	<a href="#">N65001</a>	CANISTER BRACKET	active		
800	<a href="#">100653</a>	GREASE	active		
800	<a href="#">100679</a>	GREASE	active		