

Tool model
Tool Status

N400C-1-E
active

BOSTITCH®

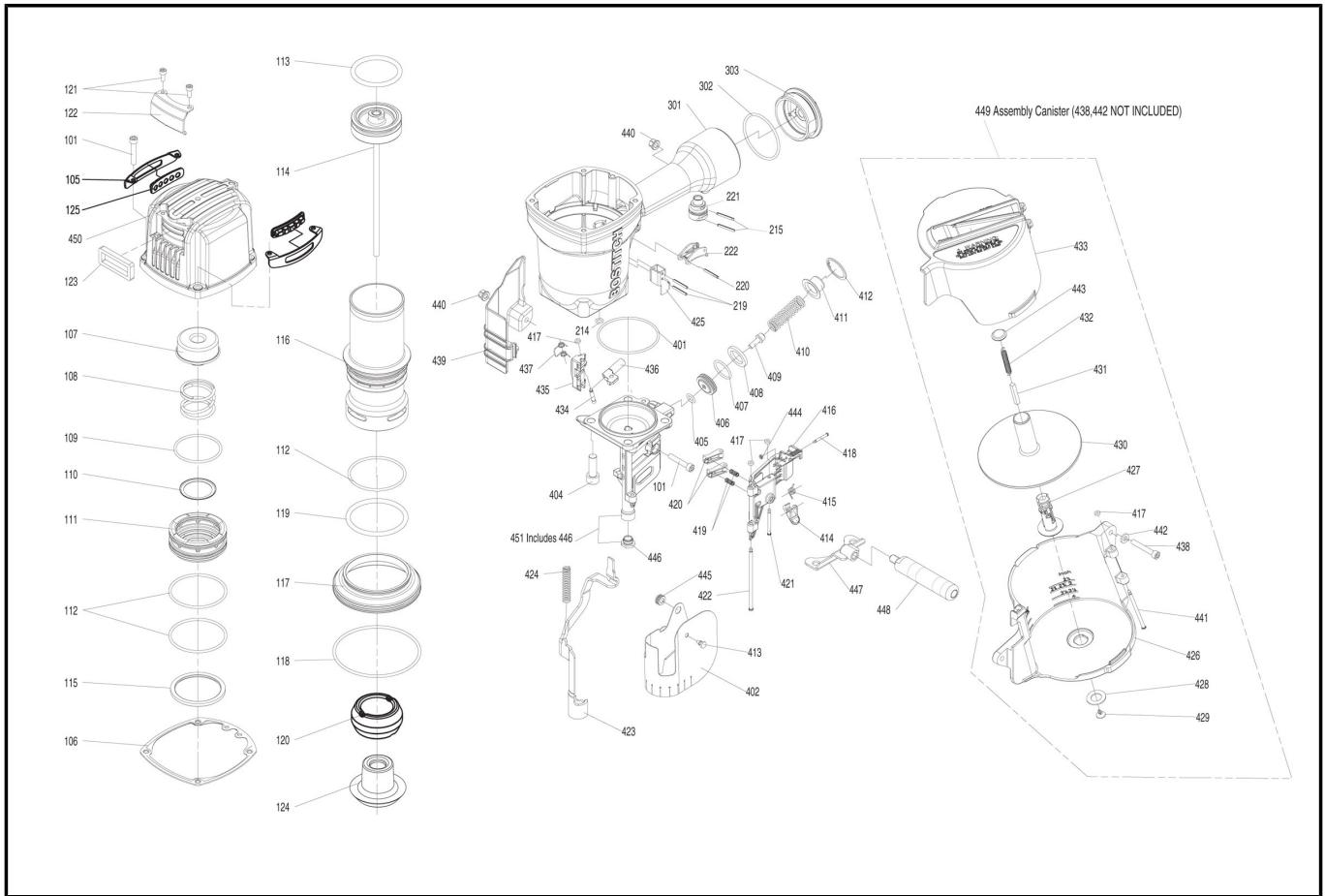


Chart Ref	Spare part code	Description	Status	Previous Part Code 1	Previous Part Code 2
101	MSC6100-35	SCREW,SHCS,M6X1.00X35	active		
105	11397-1034702	GUIDE, COVER	active		
106	11302-1034701	CYLINDER CAP SEAL	active		
107	11370-1030001	SEAL	active		
108	11360-1030001	COMPRESSION SPRING	active		
109	2041108-06050	O-RING	active		
110	11381-1030001	WASHER	active		
111	11368-1030001	HD VALVE PISTON	active		
112	2041108-07050	O-RING	active		
113	2041100-06011	O-RING	active		
114	11204-1030001	ASSEMBLY, PISTON/DRIVER	active		
115	11399-1030001	COLLAR	active		
116	11320-1030002	CYLINDER	active		
117	11321-1030001	CYLINDER SPACER	active		
118	2041104-11010	O-RING	active		
119	2041108-07060	O-RING	active		
120	11327-1034702	BUMPER- A	active		
121	MSC5080-12	SCREW,SHCS,M5X0.8X12	active		
122	11371-1034701	DEFLECTOR	active		
123	1132T-1030001	MUFFLER	active		
124	11327-1034703	BUMPER-B	active		
125	1135R-1034701	PROTECTIVE CUSHION	active		
214	2041100-01050	O-RING	active		

Chart Ref	Spare part code	Description	Status	Previous Part Code 1	Previous Part Code 2
215	2040400-05150	SPRING PIN	active		
219	102549	PIN,SPECIAL SPIROL M3XM25	active		
220	2040404-05130	SPRING PIN	active		
221	TVA6	KIT,TRIGGER VALVE	active		
222	N50082A	ASSEMBLY, TRIGGER	active		
301	11230-1038001	FRAME	active		
302	MRG049431	O - RING	active		
303	N70167	CAP,END	active		
401	2041104-08020	O-RING	active		
402	11383-1030001	MUZZLE PROTECTOR	active		
404	MSC10150-30	SCREW, SHCS M10X1.50X30 LG.	active		
405	2041100-01091	O-RING	active		
406	11364-1034701	FEED PISTON	active		
407	851384	O-RING,,987X.103	active		
408	N80123	BUMPER,FEED PISTON	active		
409	2040100-04080	BOLT ASSY	active		
410	N80122	SPRING,COMPRESSION	active		
411	N80124	COVER, FEED PISTON	active		
412	2040300-08010	C- RING	active		
413	1134B-0864701	PLUG, DUST SHIELD	active		
414	11310-0254702	DOOR LATCH	active		
415	11311-1030001	LATCH SPRING	active		
416	11361-1034701	DOOR	active		
417	854004	WASHER,RUBBER-7	active		
418	1131K-1034701	PIN	active		
419	854011	COMPRESSION SPRING	active		
420	N70149	PAWL CHECK	active		
421	11359-1034701	PIN-NAIL STOP	active		
422	11362-1034701	DOOR SHAFT PIN	active		
423	11330-1034701	SAFETY	active		
424	11337-1030001	SAFETY SPRING	active		
425	N70145	GUIDE,ARM	active		
426	11354-1034701	PLATFORM, CANISTER	active		
427	11357-1034701	MAGAZINE POST	active		
428	1138Y-0954701	RING, RUBBER	active		
429	1134M-0864701	BASE, SPRING	active		
430	11356-1030001	TRAY,METAL	active		
431	1138W-0860001	SPACER	active		
432	11328-0970001	PULL SPRING	active		
433	11355-1034701	CANISTER COVER	active		
434	11365-0864701	PIN FEED PISTON	active		
435	11306-1034701	FEED FINGER	active		
436	N80121	ROD,FEED PISTON	active		
437	N80120	SPRING,TORSION	active		
438	MSC6100-40	SCREW,SOC. HD. CAP M6X1.00X40	active		
439	1134R-1034701	SPRING COVER	active		
440	2040501-04010	CAP, BOLT	active		
441	1136R-1034701	MAGAZINE SHAFT PIN	active		
442	2040202-04010	FLAT WASHER	active		
443	1134N-1014701	SPRING BASE A	active		

Chart Ref	Spare part code	Description	Status	Previous Part Code 1	Previous Part Code 2
444	1131D-0460001	URETHANE RETAINER	active		
445	1135U-1010001	PROTECTOR WASHER	active	1035U-1010001	
446	N100120	BUSHING,WEAR	active		
447	1120K-1114701	SECOND HANDLE BASE (KIT)	active	1139G-1034701	
448	1137K-1030001	HANDLE	active		
449	7BUSB-3103003	ASSEMBLY, CANISTER	active		
450	7BUSB-3103001	ASSEMBLY, CAP	active		
451	7BUSB-3103004	ASSEMBLY, NOSE	active		