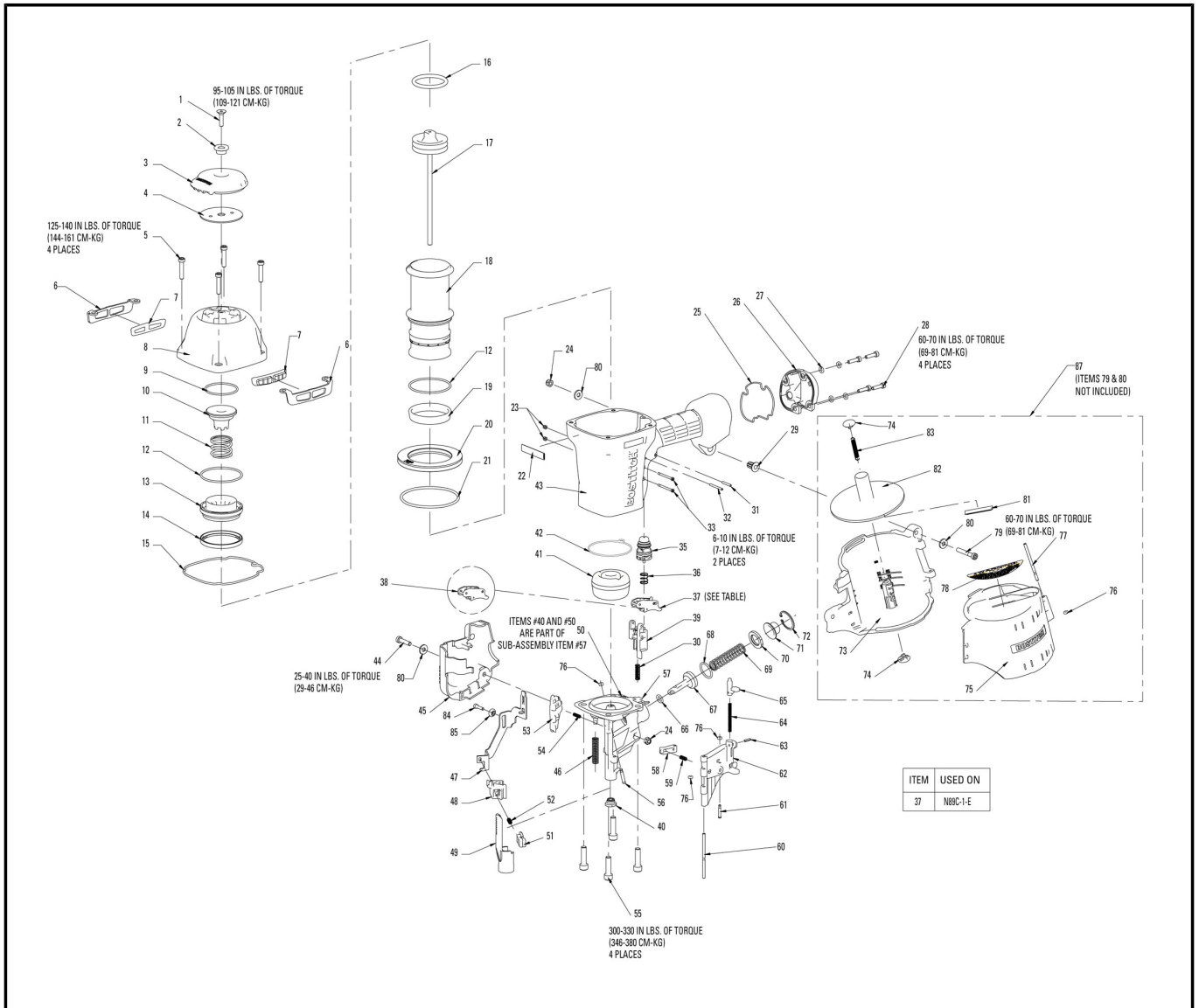


Tool model
Tool Status

N89C-1P-E
active

BOSTITCH®



| Chart Ref | Spare part code | Description | Status | Previous Part Code 1 | Previous Part Code 2 |
|-----------|----------------------------|---------------------------|--------|----------------------|----------------------|
| 1 | MSF6100-25 | SCREW,SFHCS,M6X1.00X25 | active | | |
| 2 | 163859 | BUSHING,EXHAUST DEFLECTOR | active | | |
| 3 | 163818 | DEFLECTOR,EXHAUST | active | | |
| 4 | 163830 | PLATE,CAP | active | | |
| 5 | MSC6100-30 | SCREW,SHCS,M6X1.00X30 | active | | |
| 6 | 163827 | PLATE,WEAR | active | | |
| 7 | 149819 | WEAR GUIDE | active | | |
| 8 | 163848 | FRAME CAP,MACHINING | active | | |
| 9 | 105814 | O-RING,1.929X.098 | active | | |
| 10 | 163820 | BUMPER,HEAD VALVE | active | | |
| 11 | 163844 | SPRING,HEAD VALVE | active | | |
| 12 | 163822 | O-RING,2.487X.103XNBR | active | | |
| 13 | 163821 | LOWER BODY,HEAD VALVE | active | | |
| 14 | 163823 | SEAL,HEAD VALVE | active | | |
| 15 | 163845 | SEAL,FRAME/CAP | active | | |
| 16 | 851606 | O-RING,1.850X.210 | active | | |
| 17 | 163816 | ASSEMBLY,PISTON/DRIVER | active | | |

| Chart Ref | Spare part code | Description | Status | Previous Part Code 1 | Previous Part Code 2 |
|-----------|-----------------------------|--------------------------------|----------|----------------------|----------------------|
| 18 | 163824 | SLEEVE,CYLINDER | active | | |
| 19 | 175520 | SEAL,CHECK | active | | |
| 20 | 163855 | RING,CYLINDER SLEEVE | active | | |
| 21 | 108718 | O-RING,3.484X.139 | active | | |
| 22 | 171349 | LABEL,FRONT,N89C-1P-E | active | | |
| 23 | MHE3050-100 | NUT,NYLON M3X.50 | active | | |
| 24 | MHE6100-100 | NUT,ESN M6X1 | active | | |
| 25 | 163856 | SEAL,END CAP | active | | |
| 26 | 163843 | END CAP,PAINT | active | | |
| 27 | T50118 | WASHER,PLAIN | active | | |
| 28 | MSC5080-20 | SCREW,SOC HD. CAP M5 X 20 | fut disc | | |
| 29 | 123859 | BUSHING,FLANGED ISOLATION | active | | |
| 30 | 166781 | SPRING,UPPER TRIP | active | | |
| 31 | MPP030020 | PIN,SPIRAL M3X20MM | active | | |
| 32 | 100298 | PIN,SPIRAL M3X30 | active | | |
| 33 | 108562 | SCREW,TRIGGER PIVOT | active | | |
| 35 | TVA6 | KIT,TRIGGER VALVE | active | | |
| 36 | 100387 | SPRING,COMPRESSION | active | | |
| 37 | CNTK5 | KIT,CONTACT TRIP CONVERSION | active | | |
| 38 | SEQ7 | KIT,SEQUENTIAL TRIP CONVERSION | active | | |
| 39 | 163883 | GUIDE,ARM | active | | |
| 40 | N100120 | BUSHING,WEAR | active | | |
| 41 | 107231 | BUMPER,DRIVE | active | | |
| 42 | 163884 | SEAL,NOSE | active | | |
| 43 | 171127 | FRAME,OVERMOLD | active | | |
| 44 | MSC6100-25 | SCREW,SHCS,M6X1.00X25 | active | | |
| 45 | 166766 | COVER,TRIP | active | | |
| 46 | 116970 | SPRING,CONTACT ARM | active | | |
| 47 | 163908 | ARM,UPPER CONTACT | active | | |
| 48 | 163906 | CASTING,HOUSING CONTACT | active | | |
| 49 | 166767 | ARM,LOWER CONTACT-SMOOTH | active | | |
| 50 | 171120 | NOSE,MACHINING,N89C | active | | |
| 51 | 108225 | CASTING,PLUNGER | active | | |
| 52 | 115230 | SPRING,HOUSING | active | | |
| 53 | 166773 | PAWL,FEED,MACHINING,N89C | active | | |
| 54 | 166774 | SPRING,FEED PAWL | active | | |
| 55 | MSC8125-30 | SCREW,SHCS M8X30 | active | | |
| 56 | 166787 | PIN,FEED PAWL | active | | |
| 57 | 171121 | ASSEMBLY,NOSE/WEAR BUSHING | active | | |
| 58 | N70149 | PAWL CHECK | active | | |
| 59 | 854011 | COMPRESSION SPRING | active | | |
| 60 | N80125 | PIN,SPECIAL | active | | |
| 61 | N70140 | PIN,SPECIAL(STEP) | active | | |
| 62 | 166760 | DOOR,MACHINING,N89C | active | | |
| 63 | MPG030012 | PIN,SPRING,M3X12MM | active | | |
| 64 | 854013 | SPRING, COMPRESSION | active | | |
| 65 | N70150 | LATCH DOOR | active | | |
| 66 | 88999 | O-RING,.362X.103 | active | | |
| 67 | 163894 | PISTON,FEED | active | | |
| 68 | 87112 | O-RING,.924X.103 | active | | |

| Chart Ref | Spare part code | Description | Status | Previous Part Code 1 | Previous Part Code 2 |
|-----------|----------------------------|-------------------------------|--------|------------------------|----------------------|
| 69 | 163930 | SPRING,FEED PISTON | active | | |
| 70 | 163897 | STOP,FEED PISTON | active | | |
| 71 | 163895 | COLLAR,SPRING | active | | |
| 72 | 163896 | RETAINING RING,INCH | active | | |
| 73 | 163892 | PLATFORM,CANISTER,N89C | active | | |
| 74 | 149910 | CAP,NAIL TRAY | active | | |
| 75 | 163910 | COVER,CANISTER,N89C | active | | |
| 76 | 854004 | WASHER,RUBBER-7 | active | | |
| 77 | 166771 | PIN,CANISTER COVER | active | | |
| 78 | 171350 | LABEL,CANISTER,N89C-1P-E | active | | |
| 79 | MSC6100-40 | SCREW,SOC. HD. CAP M6X1.00X40 | active | | |
| 80 | MPW6.2 | WASHER.SPECIAL | active | | |
| 82 | 180545 | OVERMOLD,TRAY | active | 163893 | |
| 83 | 166768 | SPRING,EXTENSION - CANISTER | active | | |
| 84 | MSC4070-16 | SCREW,SHCS,M4X0.7X16 | active | | |
| 85 | 163876 | BUSHING,UPPER CONTACT ARM | active | | |
| 87 | 171351 | ASSEMBLY,CANISTER | active | | |
| option | N80K2 | REMOTE CONTROL KIT | active | | |
| option | N89ORK | O-RING REPAIR KIT | active | | |
| option | 171343 | SHIELD,DUST,N89C | active | | |